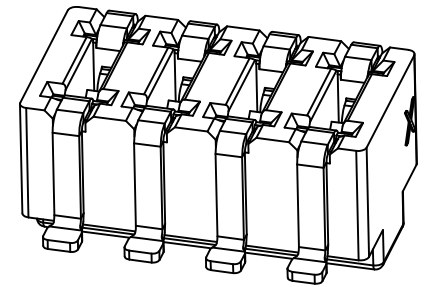
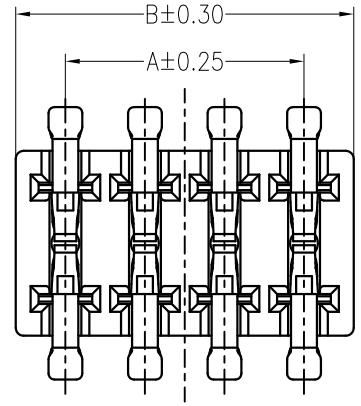
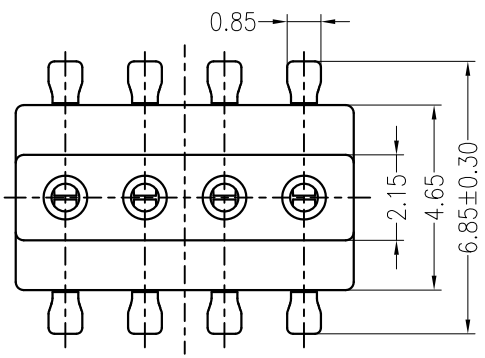
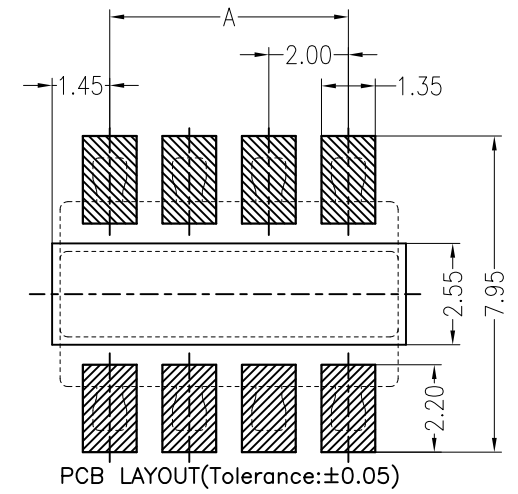
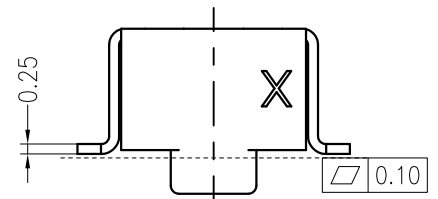
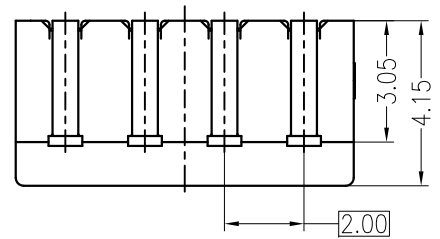


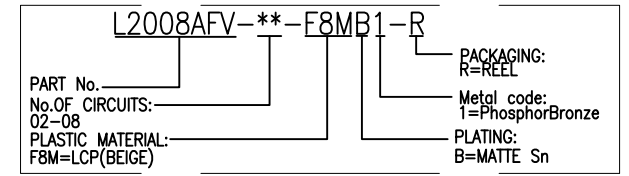
REV	DESCRIPTION	DESIGN	DATE
A0	NEW RELEASE	FangSongLe	2019/11/22



Specifications:
 Contact resistance: ≤20mΩ
 Insulation resistance: ≥1000MΩ
 Rated voltage: 250V AC DC
 Rated current: 1.0A AC DC
 Withstand Voltage: 1000V AC/minute
 Temperature Range: -25°C ~ +105°C
 Housing: LCP UL94V-0, BEIGE
 Contacts: Phosphor Bronze/MATTE Sn-plated
 Applicable wires: 24AWG



ORDER INFORMATION:



PIN	DIM A	DIM B
2	2.00	4.50
3	4.00	6.50
4	6.00	8.50
5	8.00	10.50
6	10.00	12.50
7	12.00	14.50
8	14.00	16.50

JKUN 温州健坤接插件有限公司 WENZHOU JKUN CONNECTOR CO.,LTD.		TITLE: L2008AFV	
GENERAL TOLERANCE		USE: CUSTOMER	
X. ±0.50	X. ±5°	APPD: Liuzhengling	
X.X ±0.30	X.X ±2°	CHKD: Steven	
X.XX ±0.20	X.XX ±1°	DR: FangSongLe	
UNITS: mm		SCALE 1 : 1	
		SHEET 1 / 1	