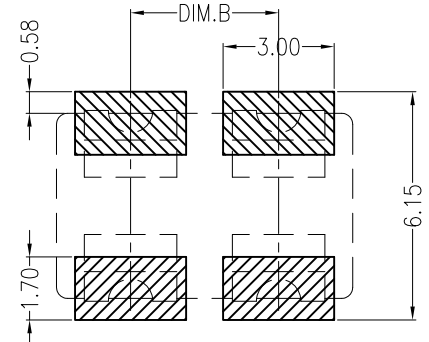
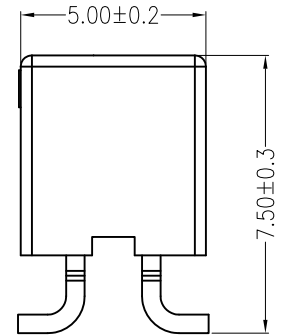
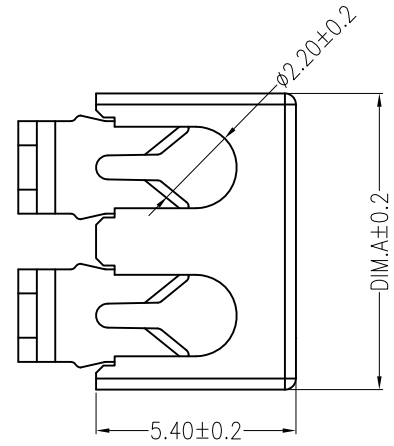
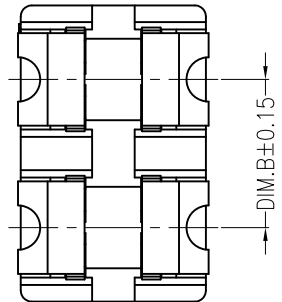
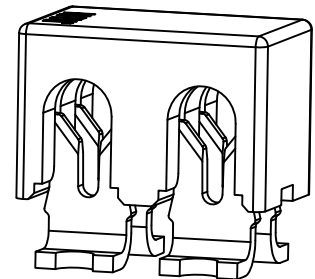


REV	DESCRIPTION	DESIGN	DATE
A	Release	李润	2016.01.15
A1	Correction of metallic material	蒋建银	2020.07.15



Board Layout

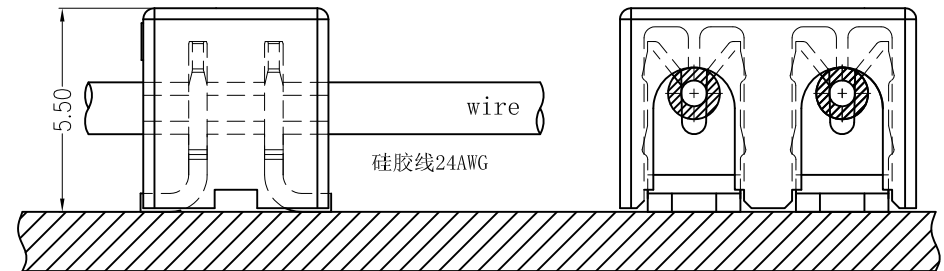
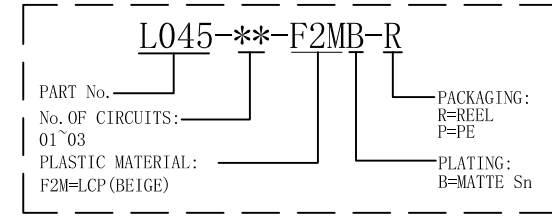
名称	尺寸	DIM. A	DIM. B	备注
L045-01		4.00		
L045-02		8.00	4.00	
L045-03		12.00	8.00	



主要技术参数 Main Specifications

线 数 (Poles): 01 to 03
 接触电阻 (Contact resistance): $\leq 20m\Omega$
 绝缘电阻 (Insulation resistance): $\geq 800M\Omega$
 额定电压 (Rated voltage): 250V AC DC
 额定电流 (Rated current): 2.0A AC DC
 耐 电 压 (Withstand Voltage): 1500V AC/minute
 温度范围 (Temperature Range): $-40^{\circ}C \sim +120^{\circ}C$

ORDER INFORMATION:



Assembly Layout

C				
B	CONTACT	n PCS	Phosphor bronze [A1]	MATTE Sn -plated
A	HOUSING	1 PCS	LCP	UL 94V-0, COLOR:BEIGE
ITEM	COMPONENT	Q'TY	MATERIAL	FINISH

JKUN 温州健坤接插件有限公司 WENZHOU JKUN CONNECTOR CO., LTD.			TITLE: 4.0mm PITCH 180° WAFER SMT TYPE	
X.±0.35	X.±	USE: MANUFACTURE	PART NO.:	
.X±0.25	.X±		L045-**-F2MB-R	
.XX±0.15	.XX±	APPD: 王亮	DWG NO.:	
--	--	CHKD: 刘振岭	JKUN/GCCP-0074	
	UNITS: mm	DR: 蒋建银	SCALE	SHEET
			1 : 1	1 / 1